



# The Berkeley Arms

[www.berkeley-arms.co.uk](http://www.berkeley-arms.co.uk) 01572 787587



## EAT for LESS, MORE OFTEN

We've changed our Tuesday evening offering! The £10 Tuesday's have gone and been replaced by our, previously lunchtime only, Eat for Less menu.

Eat for Less offers two-courses for £18 and 3-courses for £22, chosen from a selection of our most popular dishes. The Eat for Less menu is now available from 12noon until 2.45pm every Tuesday to Saturday lunchtime and between 5.30pm and 8.45pm on Tuesday evenings.



Whether it's the Hand-Pressed Berkeley Arms Rump Steak Burger, the ever popular Chorizo Scotch Egg, or one of our delicious home-made desserts we know you're going to love Eating for Less.

Also, pick up one of our new loyalty cards next time you eat with us, post a review on Tripadvisor or Google, and enjoy a further discount on your next visit!

## ULTRAFast FIBRE BROADBAND

If you'd frustrated with the speed of your internet connection then there seems to be a means by which the village could be connected to Ultrafast Full Fibre Broadband offering speeds of up to 100Mbps.

Applying for a free UK Gigabit voucher from the government's Gigabit Broadband Voucher Scheme and contributing it towards the cost of Ultrafast Full Fibre broadband being extended to the village is the first step towards achieving this goal.

Visit <https://www.openreach.co.uk/connectmycommunity> for full details and to request your voucher and contribute towards Ultrafast Full Fibre Broadband in the village.



Blues A GoGo has been a regular event at the pub for coming up to a year now and each time it gets better and better. If you love the Blues and everything Blues you can't help but enjoy Blues A GoGo.

Organised by Andy Brown, John Peirano and Dave Holmes the monthly Blues Jam session attracts a growing, diverse array of talented musicians from the local and wider area.

Keep up to date with all things Blues A GoGo by following them on social media.



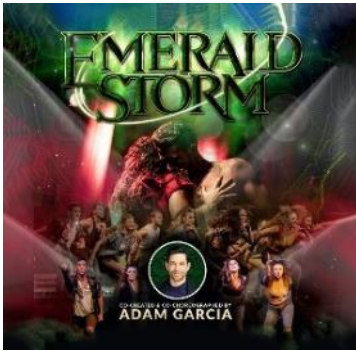
Enjoy a meal at the  
**BERKELEY ARMS**  
Book online at  
[www.berkeley-arms.co.uk](http://www.berkeley-arms.co.uk)



## EMERALD STORM

Our very own Robbie-the-Bar-Man will be taking a sabbatical from the pub for a couple of months at the end of August.

He's been cast in "Emerald Storm" which tours the UK from the middle of September and we're chuffed to bits for him. Emerald Storm is a tale of love, rivalry and turmoil co-written and co-choreographed by world renowned tap dancer and Hollywood actor Adam Garcia.



*"Feel the immense power and thunderous rhythms as Irish Dance and Modern Tap combine to soar into the 21st century. This is a dance show not to be missed! This is Irish dance reborn!"*

If you'd like to see Robbie

in action, the show hits Peterborough's New Theatre on Thursday 5 October. You can get tickets at <https://newtheatre-peterborough.com/event/emerald-storm/>

NOTE : He's not in the performance at Stamford Corn Exchange on Saturday 23 September.



## BEER, BEER, BEER

This month's cask ale from Melton's Round Corner Brewing is "Wranglers XPA".

The third of the ales we've featured on the bar from Round Corner this summer. It has an ABV of 5.0% and is described as being ... "Floral, mango aroma, clear golden yellow, thin white head, narrow ring of lacing, citrus, biscuit, bit of yeast flavour, creamy texture, good carbonation, dry bittersweet finish."



We've shaken up the lagers, removing Prava and replacing it with "POSH Lager" from the London based Forest Road Brewery.

Described as "a classically crisp, easy drinking, ALL BRITISH lager. 100% UK grown hops and barley, brewed in



SE14 by a local, independent brewery. With a lively body and visible carbonation you can hear the bubbles in posh tingle and sing in the glass before it even reaches your mouth."

## PARISH COUNCIL NEWS

*This content has been provided by Terry Brown, Clerk to Wymondham and Edmondthorpe Parish Council, on behalf of the Council.*

### Parish Council News—August 2023

Fact no 1 – there are 10480 parish councils in this country.

Fact no 2 – those 10000 odd councils spent collectively over £618,000,000 in 2021.



PC146, village constable at Wymondham from September 1893 until October 1897.

Fact no 3 – parish councils have been around since 1894.

All of which might make you begin to agree that they can and do serve some useful purpose.

There are many examples of community led initiatives to provide self-help transport schemes to combat the increasing rural isolation as a result of the withdrawal of rural bus services.

And our relative isolation does not "protect" us. We are all probably

very aware of the issues facing nearby Rutland villages such as Wing and Exton which are possibly to be "blessed" with sizeable solar farms. For or against??

Wymondham and Edmondthorpe Parish Councillors would be delighted to hear your views on all matters at the next Parish Councils on

Monday 7th August and Monday 4th September.

Probably they will discuss the proposal that the Parish should petition Melton Borough Council through a Community Governance Review to increase the number of parish councillors from 6 to 7. What would be your view?

Finally please be aware that the Parish Council has received notice of the temporary road closure of Butt Lane for a period of 5 days commencing on the 21st of August 2023.

Terry Brown, Clerk  
wepc.clerk@yahoo.co.uk  
01476 516366

# Just for LAUGHS

A man goes to the Doctor with hearing problems. "Can you describe the symptoms?" says the Doctor. "Sure" says the man. "Homers fat and Marge has blue hair."




# A SUMMER OF LIVE MUSIC at the BERKELEY ARMS!



**LIVE Music**

**The Legendary Betty Swollox Band**

Friday 11 August 2023, 8pm



**SUMMER SUNDAY JAZZ**

**Stamford Stompers**

Sunday 13 August  
3.30pm



**LIVE Music**

**BACKLASH**

Friday 18 August, 8pm



**SUMMER SUNDAY JAZZ**

**Junkyard Cats Jazz**

Sunday 20 August  
3.30pm



**SUMMER SUNDAY JAZZ**

**Lazy Alligators**

Sunday 27 August  
3.30pm




**LIVE Music**

**Belt and Braces**

Friday 1 September, 8.30pm




**LIVE Music**

**23 Reasons**

Friday 8 September, 8pm



**LIVE Music**

**Lewis Pittam**

Friday 15 September, 8.30pm



**CJ Hatt**

Friday 23 September, 8pm

Solo acoustic guitarist and harmony singer

**LIVE Music**

**THEY'RE BACK IN PORT!**




**OLD TIME SAILORS**

Saturday 7 October, 7pm

The Berkeley Arms, Wyndham

TICKETS : [www.berkeley-arms.co.uk](http://www.berkeley-arms.co.uk)

**OLD TIME SAILORS**

General sale tickets are available online at [www.berkeley-arms.co.uk](http://www.berkeley-arms.co.uk) priced at £20 per ticket.

They're available to residents of Wyndham and Edmondthorpe though, who buy them at the pub, for only £16pp.

This is going to sell out, buy your ticket now!



**IDLE HANDS**

Friday 10 November, 8pm

## COMMUNITY CONTACTS

### Backgammon at The Berkeley

Every Wednesday, 7.30pm at The Berkeley Arms  
John Hamlen

### Books at the Berkeley

1st Tuesday of the month, 7.30pm at The Berkeley Arms  
Lynne 07786 998962

### Church Bell Ringing

3rd Wednesday of the month, 7.30pm at the church  
Martin Hansen 07540 850858 martinhansen1954@gmail.com

### Coffee Morning

Every Tuesday, 10am to 12noon in the Village Hall  
Jenny Weston 01572 787284

### Edmondthorpe Social Club

01572 787636

### Roots to Wings, Nursery, Pre-School, Out of School

01572 787334 www.roots-to-wings.co.uk

### St Peters Church, Wymondham

Rev'd David Cowie revd.david.cowie@gmail.com  
01572 789954 www.framlandparishes.org

### Wymondham Allotments Association

Christine Teasdale or the Parish Council

### Wymondham Area Sports and Social Partnership

Claire Bennett-Madge 07970181107 clairepittsy@hotmail.com

### Wymondham and Edmondthorpe Parish Council

Terry Brown, Parish Clerk wepc.clerk@yahoo.co.uk

### Wymondham CofE Primary School

01572 787658 www.wymondhamprimary.org

### Wymondham Players

Jenny Weston 01572 787284

### Wymondham Village Hall

Jenny Weston 01572 787284

### Wymondham Women's Institute

2nd Thursday of the month, 7.30pm at the Village Hall  
Marion Lewis 01572 787594



## BOOK'S at the BERKELEY

Do you love reading and would like to share a great book with like minded people? Maybe you're looking for suggestions for books to read? Either way, **Books at The Berkeley** is for you!

The group meets on the first Tuesday of every month from 7.30pm for 8pm. It's very informal and new participants are always very welcome. Even if you did not have time to read a book during the month come along anyway!

## WYMONDHAM VILLAGE HALL

The latest movie evening at the Village Hall took place on Thursday 20 July. Over 25 film-goers watched "The Lost King", which tells the story of an amateur historian and her discovery of the body of Richard III under a car park in Leicester.



## OLD TIME SAILORS

We know how much you enjoyed the Old Time Sailors playing at the pub during Wymondham LIVE back in June that we couldn't say "No!" when they offered to visit Port Berkeley Arms again on Saturday 7 October.

Hosting the Old Time Sailors isn't the most straight forward event at The Berkeley and it's been necessary to increase the ticket price this time. But we've kept this increase to a minimum for residents of Wymondham and Edmondthorpe.

Tickets on our website are £20 per person but, if you live in Wymondham or Edmondthorpe, and buy your ticket at the pub they're only £16pp.

We know this is going to sell out, buy your ticket now!

THEY'RE BACK IN PORT!



## OLD TIME SAILORS

Saturday 7 October, 7pm  
The Berkeley Arms, Wymondham  
TICKETS : [www.berkeley-arms.co.uk](http://www.berkeley-arms.co.uk)

## WASSP

The Wymondham Area Sports and Social Partnership (WASSP) is a group responsible for the maintenance of the Sedley Recreation Field and Play Area.

In the past 14 months we have fundraised and applied for grants amounting to £70,000 to build the play area.

We are now hoping to fundraise for 2 mobile football goals for the Sports Field. If you have any ideas for fundraising please do get in touch.

We are also always looking for volunteers to help with weekly inspections of the play equipment and more in-depth monthly checks. Any help would be greatly appreciated

If you can help in any way, please contact Claire Bennett-Madge on 07970181107 or [clairepittsy@hotmail.com](mailto:clairepittsy@hotmail.com)



## CRAFT & FOOD FAIR

We're in the planning stages for our first Craft and Artisan Food Fair! Taking place between 10am and 4pm on Sunday 8 October we're looking for stall holders. If you, or some one you know, would like to be involved, please email us at [info@berkeley-arms.co.uk](mailto:info@berkeley-arms.co.uk) or call us on 01572 787587

# CRAFT & Artisan FOOD FAIR

SUNDAY 8 OCTOBER  
10AM TO 4PM

THE BERKELEY ARMS  
WYMONDHAM, LE14 2AG



## ADVERTISING

We've received many requests from local businesses, wanting to support our efforts with this Newsletter, to advertise in it. Recognising that the Newsletter is more sustainable with advertising we have taken the decision to accept such requests on a first-come-first-served basis. We're keen that the amount of paid advertising is kept to a minimum though and reserve the right to refuse requests as is necessary to maintain an acceptable balance.

If you would like to place an advertisement in the Newsletter, please contact us via email at [info@berkeley-arms.co.uk](mailto:info@berkeley-arms.co.uk) or by 'phone on 01572 787587

Rates for advertising are as follows ...

Size	Height x Width	1 Month	6 Months
Full Page	280mm x 195mm	£40	£200
1/2 Landscape	135mm x 195mm	£22	£110
1/2 Portrait	95mm x 280mm	£22	£110
1/3 Landscape	195mm x 90mm	£16	£80
1/4 Portrait	95mm x 135mm	£16	£80
1/4 Landscape	195mm x 70mm	£16	£80
1/6 Square	95mm x 95mm	£10	£50



## LOCAL BUSINESS DIRECTORY

We're happy to list businesses **based in Wymondham and Edmondthorpe** that provide a service to those living in the villages and their surroundings. Please mention the Berkeley Arms when calling any business from our list.

**AJ Computing** for all your IT needs, repairs, upgrades  
07900006729 [www.aj-computing.co.uk](http://www.aj-computing.co.uk)

**Ann Bladon, Piano Teacher** LRAM qualified, DBS registered  
07895 055751

**Ben Leaver Gardening** HND (Hort)  
07800 834636 [www.forgetyounotgardens.co.uk](http://www.forgetyounotgardens.co.uk)

**Frenchvines**, French wines, champagne, artisan cheeses, charcuterie, bread and chutneys from across the UK  
01572 787389 [www.frenchvines.co.uk](http://www.frenchvines.co.uk)

**Jane Knight Reflexologist**  
07976 458239 [www.jkreflexologist.com](http://www.jkreflexologist.com)

**Move those Paws** Dog walking and sitting  
07841 681398 [movethosepaws@mail.com](mailto:movethosepaws@mail.com)

**Old Bakery Antiques**, Antiques shop  
01572 787472 [www.antiques-atlas.com/oldbakeryantiques](http://www.antiques-atlas.com/oldbakeryantiques)

**Rob Gosling**, Handyman, garden clearance, laying wooden flooring, decorating, flat pack furniture assembly  
07507 414150

**Ruby Fragrances**, Handmade, eco and sustainable candles  
07908 061897 [www.etsy.com/shop/rubyfragrances](http://www.etsy.com/shop/rubyfragrances)

**Ruby Paws**, Dog walking and pet sitting  
07908 061897 [ruby-paws@hotmail.com](mailto:ruby-paws@hotmail.com)

**T J Kennedy Gardening & Landscape Design**  
07726 334501 [www.tjkennedy.design](http://www.tjkennedy.design)

**Viking Painting and Decorating**  
07775475470

**Windmill Wheels**, Custom bike builds, fitting and servicing  
01572 787720 [www.windmillwheels.co.uk](http://www.windmillwheels.co.uk)

**Wymondham Art Gallery**  
01572 787863

**Wymondham Chimney Sweep**  
07807 390348 [www.wymondhamchimneysweep.co.uk](http://www.wymondhamchimneysweep.co.uk)

**Wymondham Cleaning Company (Window Cleaning)**  
07491 576117

**Wymondham Sparks**, Firewood supplier  
07453 370088 [www.wymondhamsparks.co.uk](http://www.wymondhamsparks.co.uk)

**Wymondham Windmill**  
Family friendly tea rooms, boutique shops and windmill  
01572 787304 [www.wymondhamwindmill.co.uk](http://www.wymondhamwindmill.co.uk)

POST  
OFFICE

## MOBILE POST VAN



The Post Office Mobile Van visits Wymondham, parking opposite 55 Main Street, on Monday 12.30—14.00 & Thursday 11.30 - 13.00

## MARKET OVERTON SHOP

themarketstore in Market Overton is a community run shop that offers a whole lot more than you'd expect of a village store. Staffed by volunteers it's well worth a look when you next need a 'quick shop' and more!

- Fresh local breads
- Local meat products
- Local beers and ciders
- Fresh locally baked cakes
- Cards and stationary
- Artisan chocolates
- Ice cream
- Lottery
- Fresh fruit and veg
- Sandwiches
- Excellent wine selection
- Dry cleaning
- Newspapers and magazines
- Frozen foods
- Takeaway hot drinks

The store is open ...

Monday to Friday	07.30 to 17.30
Saturday	08.00 to 13.00
Sunday & Bank Holidays	09.00 to 12noon

1A Main Street, Market Overton, LE15 9PL 01572 767948



Please mention "The Berkeley Arms Newsletter" when using a business you've seen here!

## BUS TIMES

### R2 Rutland Flyer - Melton Mowbray to Oakham

The R2 Rutland Flyer passes through the village, Edmondthorpe and Teigh, on it's route between Melton and Oakham. The service is operated by Centrebus [www.centrebus.info](http://www.centrebus.info)

#### Melton Mowbray to Oakham - Monday to Saturday ONLY

Melton Mowbray Windsor Street (Stand W3)	07:00	09:15	11:30	13:45		16:05	17:10	18:10
Wyfordby Top (opposite)	07:06	09:21	11:36	13:51		16:11	17:16	18:15
Saxby Corner (opposite)	07:08	09:23	11:38	13:53		16:13	17:18	18:18
Wymondham, opp Sycamore Lane	07:12	09:27	11:42	13:57		16:17	17:22	18:21
Edmondthorpe, opp The Old Rectory	07:14	09:29	11:44	13:59		16:19	17:24	18:24
Teigh, opp The Green	07:17	09:32	11:47	14:02		16:22	17:27	18:27
Market Overton, opp Black Bull	07:20	09:35	11:50	14:05	15:32	16:25	17:30	18:30
Barrow, opp Main Street	07:23	09:38	11:53	14:08	15:35	16:28	17:33	18:33
Cottesmore, opp Sun Inn	07:25	09:40	11:55	14:10	15:37	16:30	17:35	18:35
Cottesmore, adj RAF Camp	07:27	09:42	11:57	14:12	15:39	16:32	17:37	
Greetham, opp Wheatsheaf	07:34	09:49	12:04	14:19	15:46	16:39	17:44	
Exton, opp Fox & Hounds	07:42	09:57	12:12	14:27	15:54	16:47	17:52	
Burley Green (opposite)	07:51	10:06	12:21	14:36	16:03	16:56	18:01	
Oakham, adj Huntsmans Drive	08:00			14:44	16:10			
Oakham Bus Station (adjacent)	08:05	10:10	12:25	14:50		17:00	18:05	18:54

#### Oakham to Melton Mowbray - Monday to Saturday ONLY

Oakham, opp Huntsmans Drive				14:45	16:10			
Oakham Bus Station (adjacent)	08:10	10:20	12:35	14:50	16:15	17:10	18:10	
Burley Green (outside)	08:15	10:25	12:40	14:55	16:20	17:15	18:15	
Exton, adj Fox & Hounds	08:24	10:34	12:49	15:04	16:29	17:24	18:24	
Greetham, opp Wheatsheaf	08:32	10:42	12:57	15:12	16:37	17:32	18:32	
Cottesmore, adj RAF Camp	08:37	10:47	13:02	15:17	16:42	17:37	18:37	
Cottesmore, outside Sun Inn	08:40	10:50	13:05	15:20	16:45	17:40	18:40	
Barrow, adj Main Street	08:43	10:53	13:08		16:48	17:43	18:43	
Market Overton, outside Black Bull	08:46	10:56	13:11	15:32	16:51	17:46	18:46	
Teigh, adj The Green	08:48	10:58	13:13		16:53	17:48	18:48	
Edmondthorpe, adj The Old Rectory	08:51	11:01	13:16		16:56	17:51	18:51	
Wymondham, adj Sycamore Lane	08:54	11:04	13:19		16:59	17:54	18:54	
Saxby Corner (outside)	08:57	11:07	13:22		17:02	17:57	18:57	
Wyfordby Top (outside)	09:00	11:10	13:25		17:05	18:00	19:00	
Melton Mowbray Windsor Street (Stand W3)	09:05	11:15	13:30		17:10	18:05	19:05	



## ROADWORKS

Resurfacing work will close the road from Wymondham towards South Witham on Thursday 3 August.

Roadworks being undertaken by National Grid Distribution will close Butt Lane between Monday 21 and Friday 25 August 2023. The diversionary route will follow the road to Melton and Mere Lane.

# ian

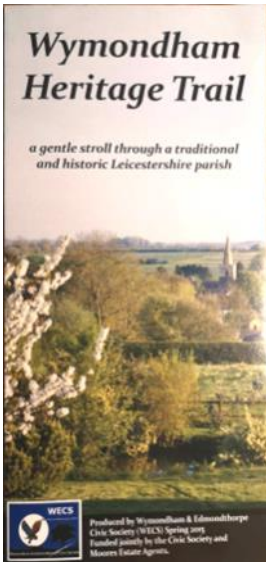
**Airport  
Transfers  
Executive  
Travel  
Meet and  
Greet  
Service  
Sporting  
Events  
Ports**

**call 07710 412276**  
[hollingworthian@live.co.uk](mailto:hollingworthian@live.co.uk)



Licensed through  
Melton Mowbray  
Borough Council.  
**FREE** quotes for all  
UK destinations

# WYMONDHAM HERITAGE TRAIL



Wymondham & Edmondthorpe Civic Society was a voluntary organisation, formed in 2004, which sought to promote high standards of planning, conservation and regeneration for the benefit of the parish.

In 2015, the Society created the Wymondham Heritage Trail leaflet which offered a guided walk around the village taking in its historical sites.

Occasionally we'll reproduce excerpts from the leaflet, which is no longer in print.

.....

## WYMONDHAM WINDMILL

Built in 1813 by the Compton Brothers from local ironstone and topped with brick, the Windmill on Butt Lane is a five-storey tower mill. It originally had six sails - it's one of only four six-sailed windmills remaining in the country - and is known as a 'Six Arm Lincolnshire Cross'. Some locals believe the Luftwaffe navigated between the mills at Wymondham and Whissendine for their raids on Coventry during World War II. It ceased grinding grain in 1952 (by then it was powered by an engine) but continued with cattle feed until 1960.



This was one of three mills that once existed in Wymondham, the others being a brick built post mill at the top of Brickyard Lane, and a steam mill on Edmondthorpe Road (Joe's Garage). Nothing now remains of these.

The windmill here is partially restored, and the cap was replaced in the 1980's. It is open for viewing, providing a superb view of the village and surrounding unspoilt countryside.

A "Wymondham Junction" sign mounted on a wall here is

from a signal box that was sited near Saxby where the four tracks went down to two towards Wymondham. It is in the typeface and colours used by the Midland Railway, which used the term 'Junction' liberally where there was a change to the track configuration as well as obvious junctions.



*The windmill is situated on Butt Lane, named after the archery butts that used to be there in the Middle Ages, for battle practice no doubt. John Berkeley was granted "Free Warren" of a large field called Big Conery, on the south side of Wymondham by Edward III, in recognition of the skill of the Wymondham bowmen at the battle of Crécy in 1346.*

.....

## MELTON MOWBRAY HERITAGE TRAIL



If you enjoy discovering the history of your local area then we have copies of the "Melton Mowbray Heritage Trail" leaflet at the pub. Or you can download it at

[www.discovermelton.com/heritage](http://www.discovermelton.com/heritage)

**If you have anything you would like to share or publicise in this monthly newsletter, or have a story you would like to tell, we'd be pleased to hear from you. Please contact us using the details below.**

**The Berkeley Arms**  
Main Street, Wymondham, LE14 2AG  
[www.berkeley-arms.co.uk](http://www.berkeley-arms.co.uk)  
[info@berkeley-arms.co.uk](mailto:info@berkeley-arms.co.uk)  
**01572 787587**